



CITY OF
uMHLATHUZE
VISION INTO ACTION

Supplier Name:

REQUEST FOR QUOTATION FOR GOODS AND SERVICES FOR THE CITY OF UMHLATHUZE

Procurement Less than R200 000 (including vat)

(For publication in the City of uMhlathuze Notice Boards and website)

The City of uMhlathuze request your quotation on the goods and/or services listed hereunder and/or on the available RFQ forms. Please furnish all information as requested and return your quotation on the date stipulated. Late and incomplete submissions will invalidate the quotation submitted.

ADVERTISEMENT DATE	07 August 2019
PROCUREMENT OFFICER	Zanele Mthembu
TEL.NO.	035 907 5798
RFQ NO.	RFQ 101477
DESCRIPTION OF GOODS AND SERVICES	Appointment of a Professional electrical contractor in traffic signals installation to install traffic signals at Johnross highway/Melomed intersection materials will be supplied as per attached list. Contractor to quote for outstanding material if any for robot to function proper. Proof of previous similar experiences is required
CLOSING DATE FOR QUOTATION	16 August 2019
TIME	12H00
SUBMISSION OF QUOTATION	TO BE DEPOSITED IN THE QUOTATION BOX AT uMHLATHUZE MUNICIPALITY SCMU RECEPTION, END OF BETA STRAAL, ALTON, RICHARDS BAY
CUMPSORY SITE MEETING	Yes
SITE MEETING DATE AND TIME	13 August 2019@12h30
SITE MEETING VENUE	John Ross Eco Park BP - Garage
TECHNICAL ENQUIRIES FOR ADDITIONAL INFORMATION:	Jaco Schutte / Andrew Payton 035 907 5234 / 035 907 5746

Quotation above R30 000 will be evaluated on the basis of the 80:20 point system as stipulated in the Preferential Procurement Policy Framework (Act number 5 of 2000) and City's Supply Chain Management Policy and Procedures.



SIGNATURE OF BIDDER	
CAPACITY	

PLEASE NOTE THAT NO PRICE INCREASE WILL BE APPROVED AFTER SUBMISSION OF QUOTATION.

REQUEST FOR QUOTATION (RFQ) NUMBER: RFQ 101477

Delivery Address: **STORES AND PROCUREMENT, BETA STRAAL, ALTON, RICHARDS BAY**

ITEM NO.	DESCRIPTION	Quantity Required	Delivery Period/Lead Time	Price per Unit (Excluding VAT)	Total (Excluding Vat)
1.	Appointment of a Professional electrical contractor in traffic signals installation to install traffic signals at Johnross highway/Melomed intersection materials will be supplied as per attached list. Contractor to quote for outstanding material if any for robot to function proper. Proof of previous similar experiences is required	1			
NB: ANY AND ALL ALTERATIONS MUST BE SIGNED FOR BY THE BIDDER CONFIRMING THAT ALL ALTERATION WAS MADE BY THE BIDDER.				Sub Total	
				Vat	
				Grand Total	

ALL BIDDERS MUST PLEASE MAKE SURE THAT THEY KNOW WHAT THEY ARE QUOTING FOR

Conditions

1. All prices quoted must be exclusive of Value Added Tax (VAT).
2. Prices quoted must include delivery charges and goods must be delivered to the address indicated.
3. All prices submitted must be firm. "Firm" prices are deemed to be fixed prices, which are only subject to the following statutory changes, namely VAT and any levy related to customs and excise.
4. Quantities are given in good faith and without commitment to the City of uMhlathuze.
5. Vendors not registered for Value Added Tax with SARS will be treated as Non VAT vendors
6. Certified copy BEE certificate must be supplied together with quote.
7. Letter of Good standing must be provided.

NB: If quotation exceeds R30 000 (VAT incl.), the successful bidder will be required to submit a valid TAX CLEARANCE CERTIFICATE prior to the order being placed.

NOTE: "Council may not necessarily accept the lowest or any other offer, and reserves the right to select in its favour any, all, or no portion of any offer made."



**CITY OF
uMHLATHUZE**
VISION INTO ACTION

SUPPLY CHAIN MANAGEMENT UNIT
END OF BETA STRAAL
ALTON
RICHARDS BAY 3900

VAT NO: 4690193521

BIDDER:

TEL NO:
FAX NO:

REQUEST FOR QUOTATION	
RFQ NUMBER:	RFQ DATE:
CONTACT PERSON	
NAME:	Zanele Mthembu
TEL NO:	035 907 5798

City of uMhlathuze Vendor No.

CSD No.

Submission Deadline

Submission Closing Time: 12H00

OFFICE USE ONLY: PRICE/S TO BE VAT EXCLUSIVE Please submit all Quotations to the fax number stated above	
RFQ'S above R30 000-00 to a maximum of R200 000 will be evaluated on the basis of the 80:20 point system as stipulated in the Preferential Procurement Policy Framework Act (Act number 5 of 2000).	
Point will be allocated as follows:	
Points for price:	80
Points for B-BBEE (Max of 20):	
B-BBEE status Level of Contributor	Number of Points (80/20 system)
1	20
2	18
3	16
4	12
5	8
6	6
7	4
8	2
Non- Compliant Contributor	0



CHECKLIST

RFQ NO:

PLEASE USE THE CHECKLIST TO CONFIRM THAT ALL COMPULSARY DOCUMENTS HAVE BEEN ATTACHED TO YOUR QOUTATION.

No.	Details	√
1.	MBD 4: Declaration of Interest (attached)	
2.	Certified Copy of BBBEE Certificate-	
3.	Original Tax Clearance Certificate	
4.	Letter of good standing	
5.	Central supplier database registration- attach report-	
6.	All alterations have been signed	
7.	Quotation is signed.	

ATTACHED VALID LETTER OF GOOD STANDING, BBBEE CERTIFICATE

TAX CLEARANCE CERTIFICATE MUST BE SUBMITTED IF QUOTATION IS MORE THAN R30 000.00

PLEASE NOTE THAT NOT SUBMITTING THE COMPULSORY DOCUMENTS MAY LEAD TO DISQUALIFICATION

Only bidders with CIDB grade 1 EP or above may respond to this request.

Signature:

NAME:



uMH Q4

DECLARATION OF INTEREST MBD 4

1. No bid will be accepted from persons in the service of the state¹.
2. Any person, having a kinship with persons in the service of the state, including a blood relationship, may make an offer or offers in terms of this invitation to bid. In view of possible allegations of favouritism, should the resulting bid, or part thereof, be awarded to persons connected with or related to persons in service of the state, it is required that the bidder or their authorised representative declare their position in relation to the evaluating/adjudicating authority.
3. **In order to give effect to the above, the following questionnaire must be completed and submitted with the bid.**
 - 3.1 Full Name of bidder or his or her representative:
 - 3.2 Identity Number:
 - 3.3 Position occupied in the Company (director, trustee, shareholder²):
 - 3.4 Company Registration Number:
 - 3.5 Tax Reference Number:
 - 3.6 VAT Registration Number:
 - 3.7 The names of all directors / trustees / shareholders members, their individual identity numbers and state employee numbers must be indicated in paragraph 4 below.
 - 3.8 Are you presently in the service of the state? Yes ☐ No ☐
(Mark appropriate block with "X")
 - 3.8.1 If yes, furnish particulars
.....
.....

¹MSCM Regulations: "in the service of the state" means to be:-

- (a) a member of –
 - (i) any municipal council;
 - (ii) any provincial legislature; or
 - (iii) the national Assembly or the national Council of provinces;
- (b) a member of the board of directors of any municipal entity;
- (c) an official of any municipality or municipal entity;
- (d) an employee of any national or provincial department, national or provincial public entity or constitutional institution within the meaning of the Public Finance Management Act, 1999 (Act No.1 of 1999);
- (e) a member of the accounting authority of any national or provincial public entity; or
- (f) an employee of Parliament or a provincial legislature.

² Shareholder" means a person who owns shares in the company and is actively involved in the management of the company or business and exercises control over the company.



3.9 Have you been in the service of the state for the past twelve months? Yes ☐ No ☐
(Mark appropriate block with "X")

3.9.1 If yes, furnish particulars

.....
.....

3.10 Do you have any relationship (family, friend, other) with persons in the service of the state and who may be involved with the evaluation and or adjudication of this bid? Yes ☐ No ☐
(Mark appropriate block with "X")

3.10.1 If yes, furnish particulars

.....
.....

3.11 Are you, aware of any relationship (family, friend, other) between any other bidder and any persons in the service of the state who may be involved with the evaluation and or adjudication of this bid? Yes ☐ No ☐
(Mark appropriate block with "X")

3.11.1 If yes, furnish particulars

.....
.....

3.12 Are any of the company's directors, trustees, managers, principle shareholders or stakeholders in service of the state. Yes ☐ No ☐
(Mark appropriate block with "X")

3.12.1 If yes, furnish particulars

.....
.....

3.13 Are any spouse, child or parent of the company's directors trustees, managers, principle shareholders or stakeholders in service of the state? Yes ☐ No ☐
(Mark appropriate block with "X")

3.13.1 If yes, furnish particulars.

.....
.....

3.14 Do you or any of the directors, trustees, managers, principle shareholders, or stakeholders of this company



have any interest in any other related companies or business whether or not they are bidding for this contract .

Yes ☐ No ☐
(Mark appropriate block with "X")

3.14.1 If yes, furnish particulars.

.....
.....

4. Full details of directors / trustees / members / shareholders.

Full Name	Identity Number	State Employee Number

CERTIFICATION OF CORRECTNESS OF INFORMATION SUPPLIED IN THIS DOCUMENT

I/ WE, THE UNDERSIGNED, WHO WARRANT THAT I AM DULY AUTHORISED TO DO SO ON BEHALF OF THE TENDERER, CERTIFY THAT THE INFORMATION SUPPLIED IN TERMS OF THIS DOCUMENT IS CORRECT AND TRUE, THAT THE SIGNATORY TO THIS DOCUMENT IS DULY AUTHORISED AND ACKNOWLEDGE THAT:

- (1) The tenderer will furnish documentary proof regarding any tendering issue to the satisfaction of uMhlathuze Municipality, if requested to do so.
- (2) If the information supplied is found to be incorrect and/or false then uMhlathuze Municipality, in addition to any remedies it may have, may:
 - (a) Recover from the contractor all costs, losses or damages incurred or sustained by uMhlathuze Municipality as a result of the award of the contract, and/or
 - (b) Cancel the contract and claim any damages which uMhlathuze Municipality may suffer by having to make less favourable arrangements after such cancellation.

DATE: SIGNATURE:

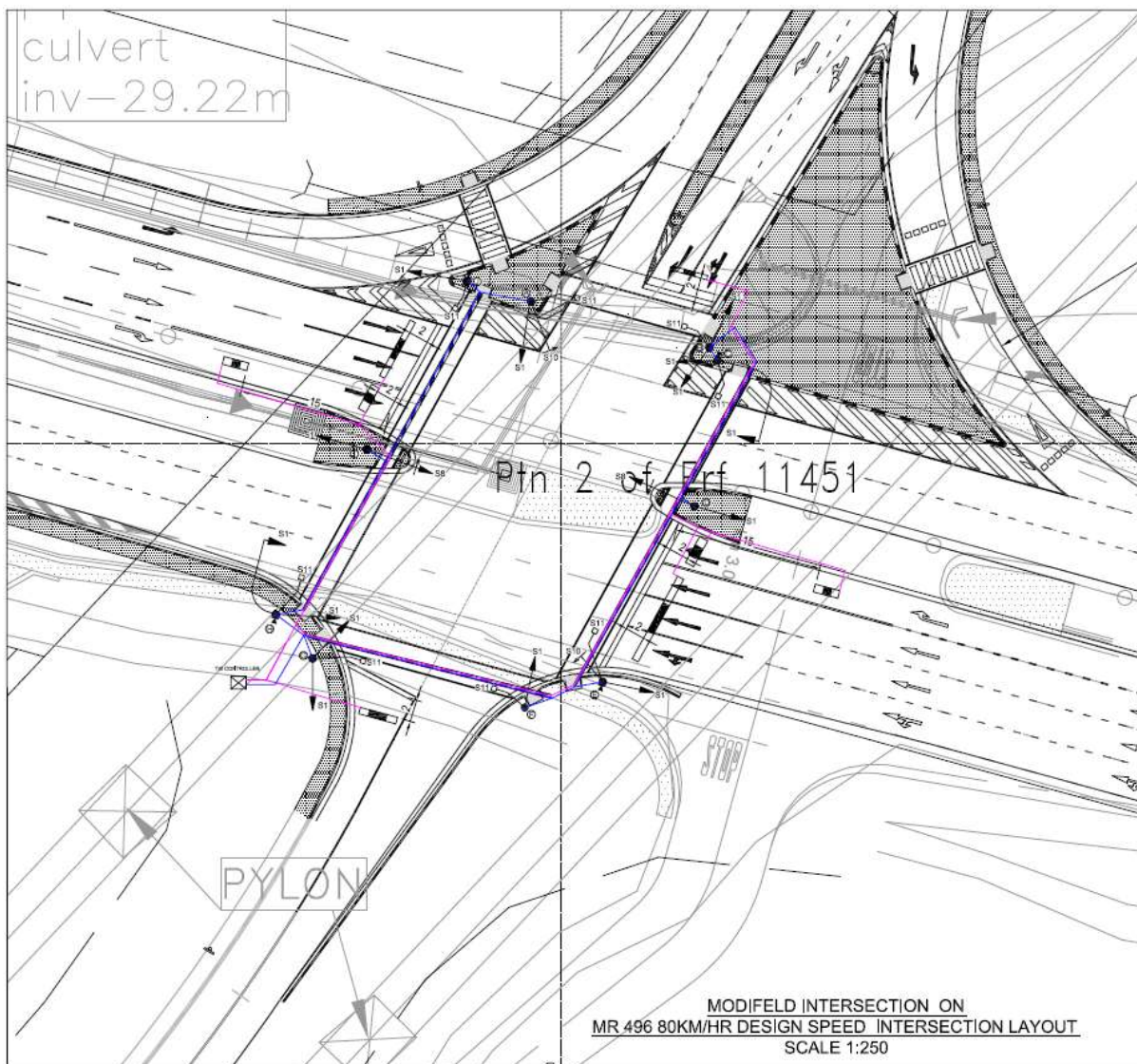
CAPACITY : NAME OF BIDDER :



QUOTATION SPECIFICATION – NEW TRAFFIC SIGNAL CONSTRUCTION.

DESCRIPTION:

Appoint an experience contractor to install a complete traffic signal setup as per the design done by Aurecon consulting engineers (DMS1350685) at the John Ross / Eco Park intersection.



SPECIFICATION:

Site:

The site is a fully developed intersection where the underground work like sleeves and pole bolt cage installation are already done. The site is at the John Ross / Eco Park Intersection.



Scope:

- Open all sleeve points
- Open all bolt cages
- Install cabling. Cables will be the responsibility of the contractor until handover.
- Dump 75mm concrete layer over all cabling. Concrete will be supplied by municipality.
- Cut and Install Loops complete.
- Install all poles with heads complete.
- Install foundation and Controller Box
- Provide concrete work around poles bases to protect cabling.
- Repair Concrete slabs where damaged on islands and walkways.
- Install link cable to Municipal power supply.
- Install Controller as per supplier's specification.
- Controller must be installed and commissioned as per the timing intervals on the detail design and as instructed by the Traffic Signals Technician.
- All Controllers must be linked to the existing Traffic Signal remote Outstation/Server and comply to fault monitoring and GPRS communication.
- All issued materials left over must be supplied to the Traffic Signal Office.
- Provide As-built information and photo evidence.
- All additional materials and fixing materials over and above the supplied items must be supplied by the contractor.

Material that will be supplied; (DMS1357346)

1.	TRAFFIC SIGNAL HEADS		
1.1	2 ASPECT TRAFFIC SIGNAL HEADS TYPE S10	ea	2
1.2	2 ASPECT TRAFFIC SIGNAL HEADS TYPE S11P	ea	10
1.3	3 ASPECT TRAFFIC SIGNAL HEADS TYPE S1	ea	16
1.4	5 ASPECT TRAFFIC SIGNAL HEADS TYPE S8	ea	4
2.	POLES		
2.1	3.3M TRAFFIC SIGNAL POLES	ea	8
2.2	3.3M POLE FOUNDATION FRAME	ea	8
2.3	4.5M CANTILEVER TRAFFIC SIGNAL POLE	ea	2
2.4	CANTILEVER POLE FOUNDATION FRAME	ea	2
2.5	Z3 POLE TERMINATION BOXES	ea	10
3.	CABLES		
3.1	27 CORE TRAFFIC SIGNAL CABLE 1.5mm	m	600
3.2	2 CORE FEEDER CABLES 1.5mm TWISTED	m	1 000
3.3	2 CORE POWER CABLES 10mm	m	50
4.	CONTROLLER		



4.1	ESA 32	ea	1

Requirements:

- The contractor must attach proof of "SIMILAR" previous experience, failure will render the quote incomplete and the quote cannot be accepted.
- Contractor must be able to install, program and test the controller.
- Detail information will be discussed at the compulsory site meeting that will form part of the quote specifications.
- Installation must be done in **3 weeks**. Commencement date will be agreed on as soon as the order is issued.
- GCC requirements will be used for contract related issues.
- Closing date and time to be as indicated by SCM advert.
- Inquiries call Andrew Payton [0828099078](tel:0828099078) or Jaco Schutte - [0836612200](tel:0836612200)

Payments:

- Only one Payment will be made after installation to the satisfaction of the Municipal representative.
- Please take note that payment will be made on the work done and not total amounts in the BOQ.

Bill of Quantities:

Installation of traffic signals: Poles and heads; Cables and loops; Controller and power supply; Commissioning; As per municipal standards.

No	Description	UoM	QTY	Unit Price (R)	Amount (R)
1.	Preliminary and General (To include all P&G's relating to the nature of works)	Sum	1		
2.	Earth works to include excavation, backfilling and compacting to 93% ASHTOO mode.	m ³	40		
3.	Traffic Signal heads installation complete.				
3.1	2 Aspect Traffic Signal Heads Type S10	No.	2		
3.2	2 Aspect Traffic Signal Heads Type S11p	No.	10		
3.3	3 Aspect Traffic Signal Heads Type S1	No.	16		
3.4	5 Aspect Traffic Signal Heads Type S8	No.	4		
4.	Install Poles complete including Labour and Plant.				
4.1	3.3m Traffic Signal Poles	No.	8		



4.2	3.3m Pole Foundation Frame	No.	8		
4.3	4.5m Cantilever Traffic Signal Pole	No.	2		
4.4	Cantilever Pole Foundation Frame	No.	2		
4.5	Z3 Pole Termination Boxes	No.	10		
5.	Cables Laying including Labour and Plant				
5.1	27 Core Traffic Signal Cable 1.5mm	m	600		
5.2	2 Core Feeder Cables 1.5mm Twisted loop cable	m	1000		
5.3	2 Core Power Cables 10mm	m	50		
6.	Controller Installation including Labour, Programming, Commissioning and Plant.				
6.1	ESA 32	No.	1		
7.	Concrete Works – 25 MPA – for Labour, Material and Plant	m ³	6		
Sub-Total					
Contingencies @ 10 %					
Sub-Total					
VAT @ 15%					
Total Amount					